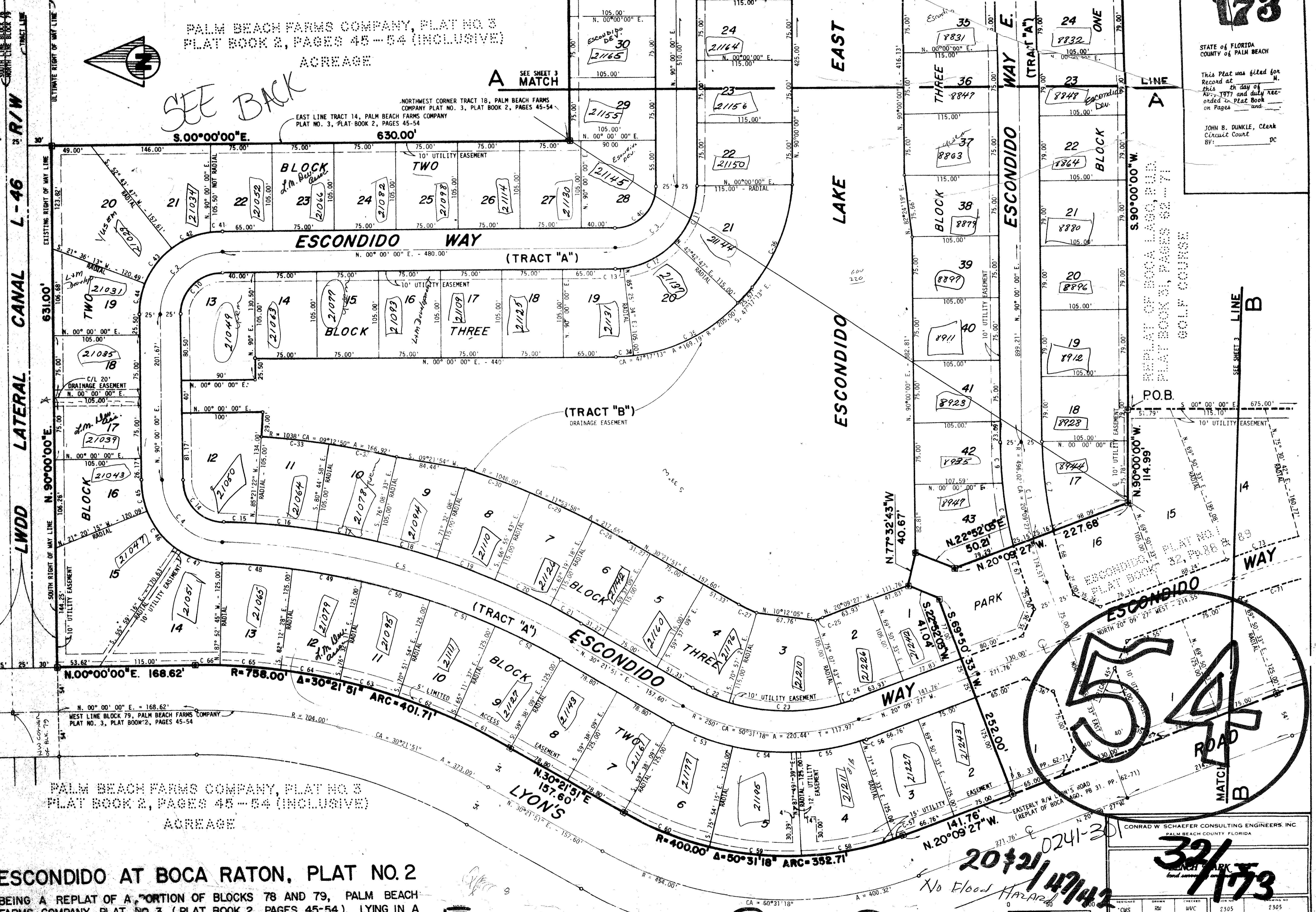


PALM BEACH FARMS COMPANY, PLAT NO. 3  
PLAT BOOK 2, PAGES 45 - 54 (INCLUSIVE)  
ACREAGE

SEE BACK

NORTHWEST CORNER TRACT 18, PALM BEACH FARMS  
COMPANY PLAT NO. 3, PLAT BOOK 2, PAGES 45-54  
EAST LINE TRACT 14, PALM BEACH FARMS COMPANY  
PLAT NO. 3, PLAT BOOK 2, PAGES 45-54

STATE OF FLORIDA  
COUNTY OF PALM BEACH  
This Plat was filed for  
Record at  
this 24th day of  
August, 1977 and duly re-  
corded in Plat Book  
on Pages  
and  
JOHN B. DUNKLE, Clerk  
Circuit Court  
BY: \_\_\_\_\_ DC



PALM BEACH FARMS COMPANY, PLAT NO. 3  
PLAT BOOK 2, PAGES 45 - 54 (INCLUSIVE)  
ACREAGE

ESCONDIDO AT BOCA RATON, PLAT NO. 2

BEING A REPLAT OF A PORTION OF BLOCKS 78 AND 79, PALM BEACH  
FARMS COMPANY PLAT NO. 3, (PLAT BOOK 2, PAGES 45-54), LYING IN A  
PART OF SECTIONS 20 AND 21, TWP 47 SO., RGE. 42 E., PALM BEACH CO.,  
FLORIDA  
AUGUST, 1976

FOR CURVE DATA (C NO.'S) SEE SHEET 3  
THIS INSTRUMENT WAS PREPARED BY \_\_\_\_\_ J. WHITTEN IN THE OFFICES OF BENCHMARK LAND SURVEYING  
HARTMAN, FLORIDA  
DATE: \_\_\_\_\_

CONRAD W. SCHAEFER CONSULTING ENGINEERS, INC.  
PALM BEACH COUNTY, FLORIDA

32/173

DESIGNED	DRAWN	CHECKED	DATE	SCALE	APPROVED	FILE NO.	SHEET NO.
CWS	RW	WVC	2305			2305	

GRAPHIC SCALE